

# A NOVEL APPROACH IN TRANSGINGIVAL IMPLANT DENTISTRY

## THE VERTICAL NECK DESIGN



24<sup>TH</sup> Meeting of the European Association for Osseointegration  
STOCKHOLM 2015

AUTHORS: DR. GABRIELE CARUSO  
DR. CARLO COIANA  
ODT. ALESSANDRO CATTANEO



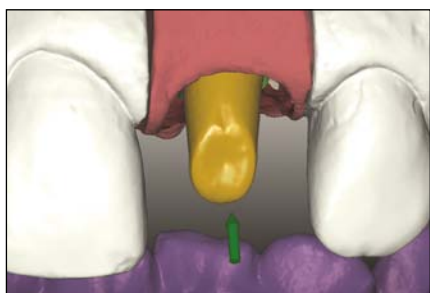
1. Preoperative photograph with lip retractors.



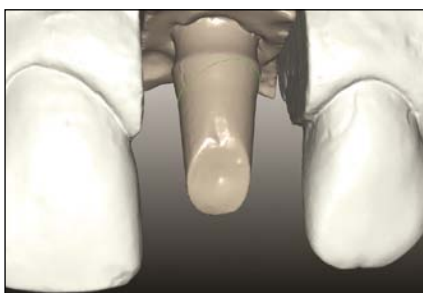
2. Implant positioning in site 21, vestibular aspect.



3. 3 months post-op.



4. Virtual model: gingiva and abutment.



5. Defining the prosthetic margins on the preabutment and on the abutment.



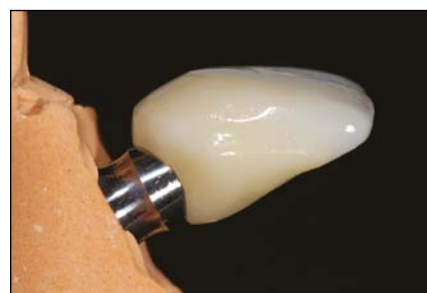
6. Provisional crown cemented, with a well defined emergence profile on the vertical transgingival segment.



7. 34 days after provisional crown delivering.



8. Adaptation of the gingiva around the emergence profile of the provisional crown.



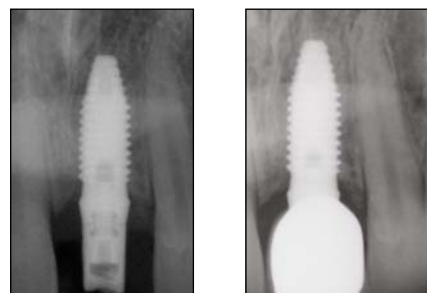
9. Definitive crown: note the emergence profile to support and shape the soft tissue.



10. Definitive crown: 30 months after occlusal loading, vestibular aspect. The entire interproximal papillae are achieved.



11. Definitive crown: 30 months after occlusal loading, vestibular aspect.



12, 13. Periapical radiographs of tooth 21, using parallel technique, control before crown delivering and after 30 months of occlusal loading.